



CoconutCreek.net/Ambassador

Meeting Guidelines



Listen

Actively listen to the speaker and other community members. Feel free to ask for clarification, but please hold questions until the end of the full presentation.



Participate

Think about how this topic impacts you, your neighbors, and the City. Offer feedback and suggestions.



Share

Agree that you will share this information with your HOA, community, and neighbors.

Welcome

to the Ambassador Program

Karen Brooks
CITY MANAGER
CITY OF COCONUT CREEK

Presenters

Sheila Rose

Deputy City Manager



Ted Risberg

Senior Project Manager



Steve Ramanand

Solid Waste & Recycling Specialist



Connect With Us



[COCONUTCREEK.NET/LANDFILL](https://coconutcreek.net/landfill)

Landfill, Solid Waste and Recycling

Connect With Us



COCONUTCREEK.NET/LANDFILL

The 3 LARGEST Landfills in the U.S.

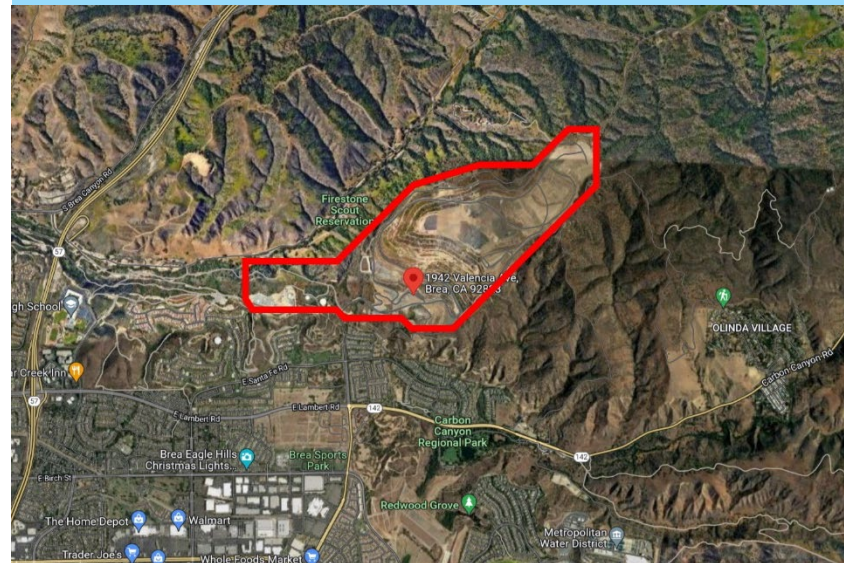
McCarty Road Landfill



Houston, TX

Privately Owned

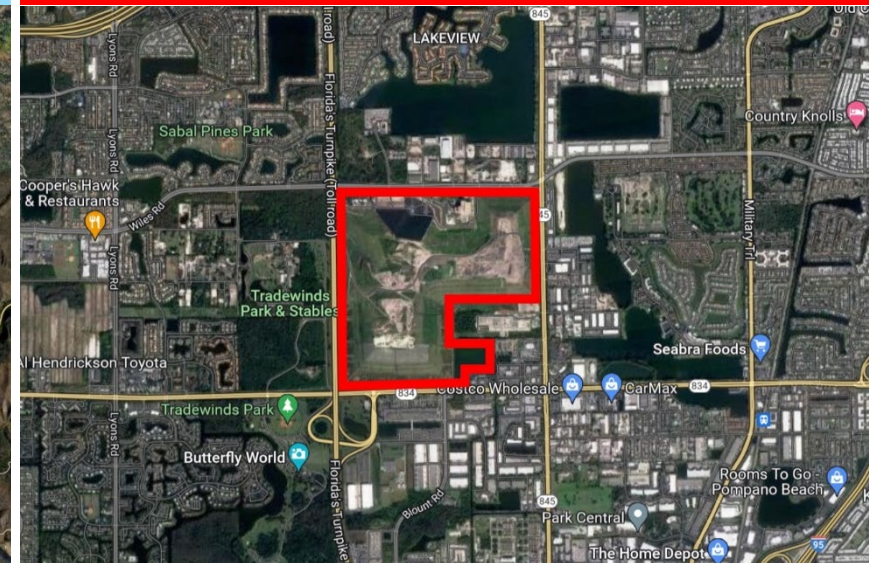
Olinda Alpha Landfill



Brea, CA

Publicly Owned

Monarch Hill Landfill



Unincorporated Broward County

Privately Owned

Connect With Us



COCONUTCREEK.NET/LANDFILL

The 3 **LARGEST** Landfills in the U.S.

McCarty Road Landfill
Houston, TX

Approximate 2010
POPULATION
45,550

Olinda Alpha Landfill
Brea, CA

Approximate 2010
POPULATION
44,200

Monarch Hill Landfill
Unincorporated Broward

Approximate 2010
POPULATION
111,100
2.5x

Population based on 3-mile radius from center of landfill.

Connect With Us



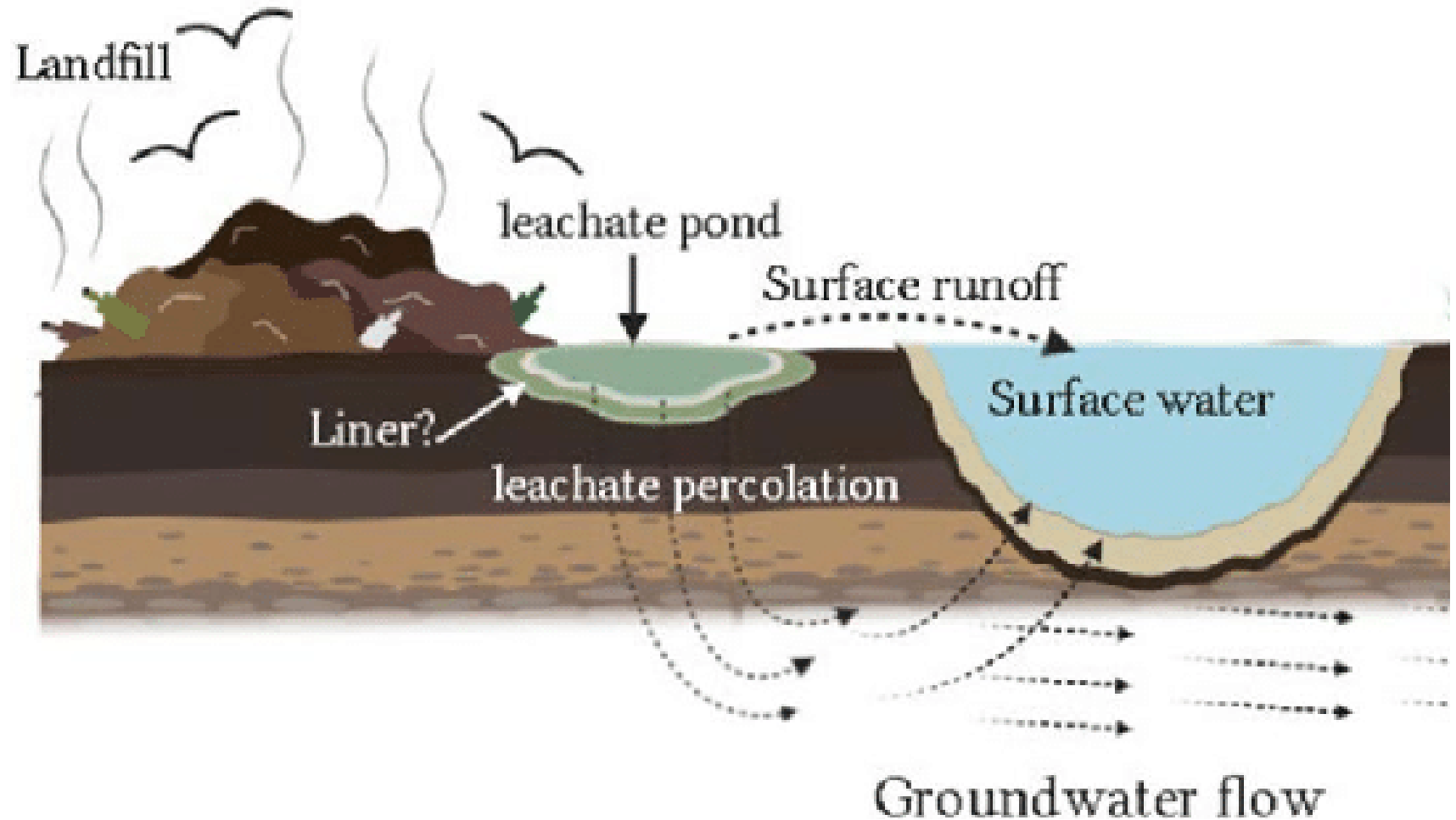
COCONUTCREEK.NET/LANDFILL

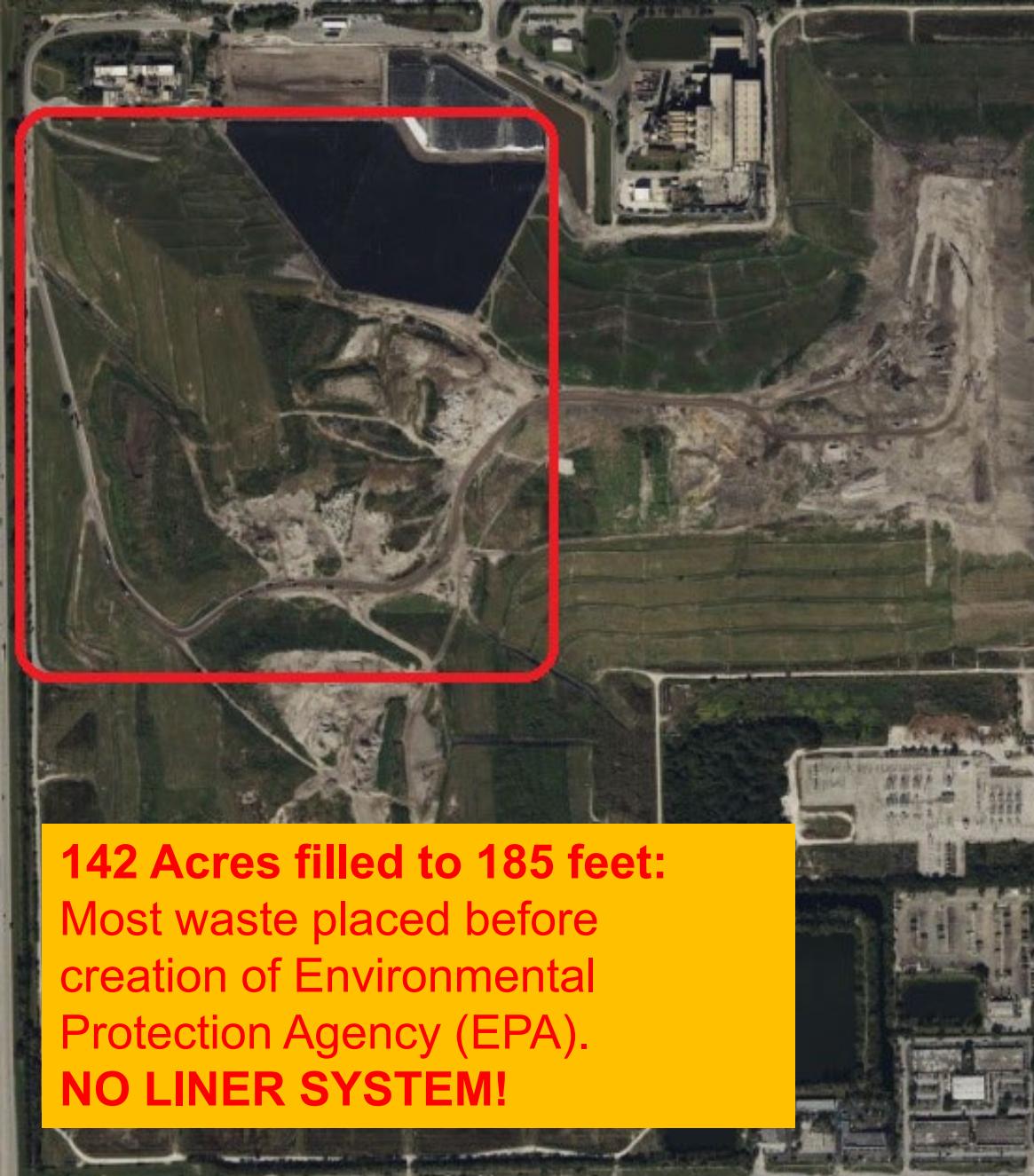
Why We Are Concerned?

Monarch Hill Landfill

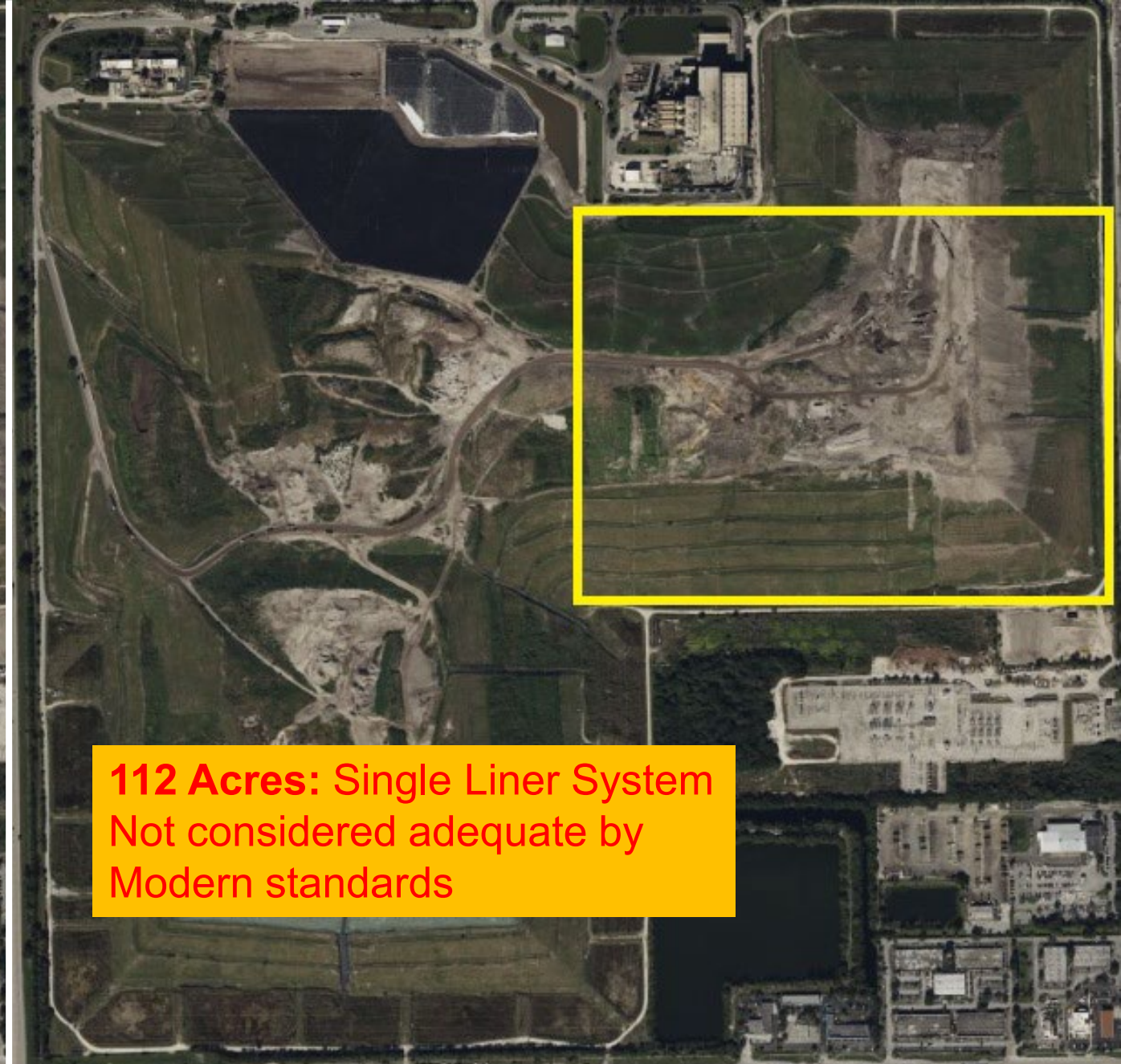
Approximately 33,000
gallons of leachate
collected daily

12 millions gallons
per year





142 Acres filled to 185 feet:
Most waste placed before
creation of Environmental
Protection Agency (EPA).
NO LINER SYSTEM!



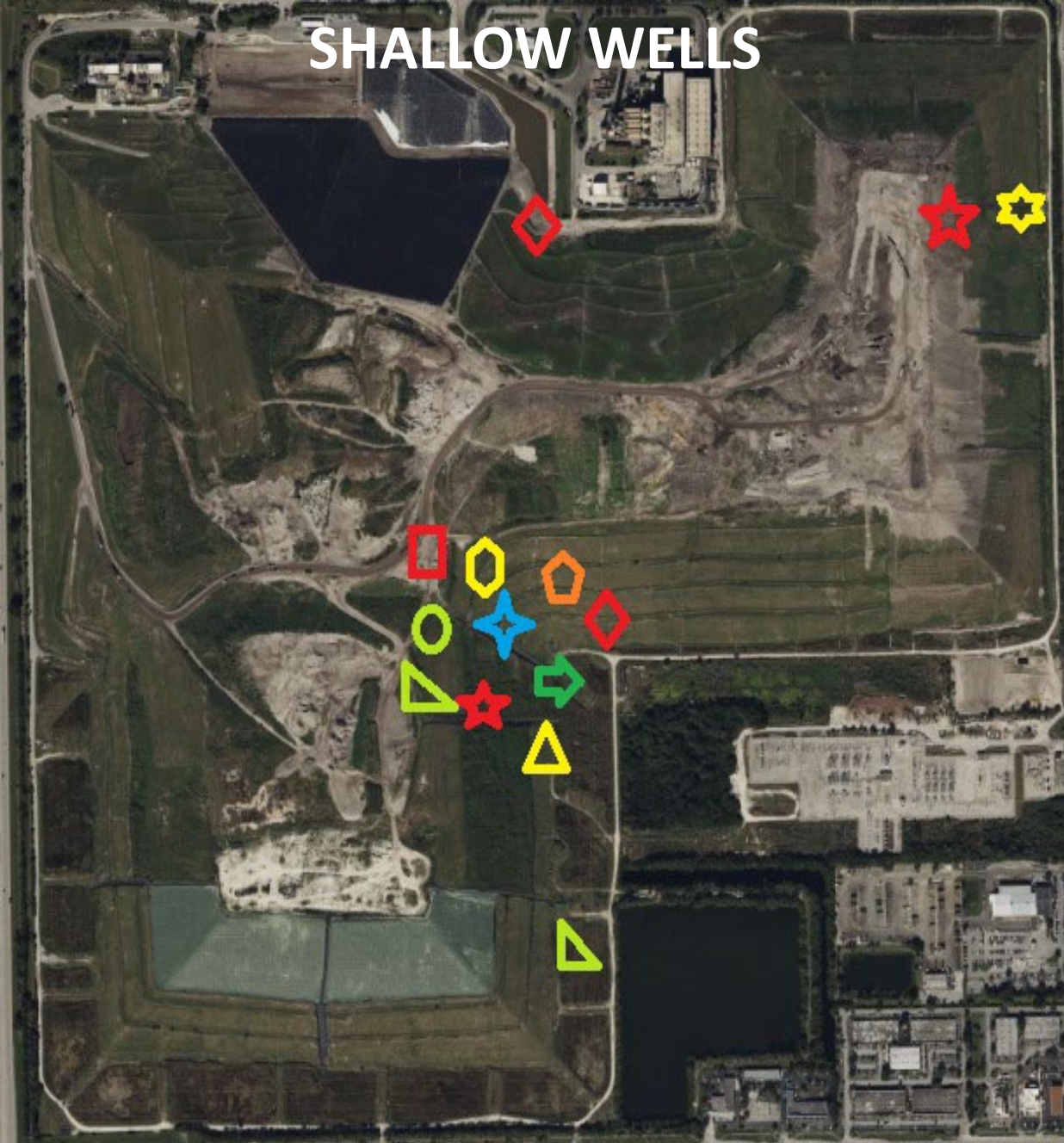
112 Acres: Single Liner System
Not considered adequate by
Modern standards

Connect With Us

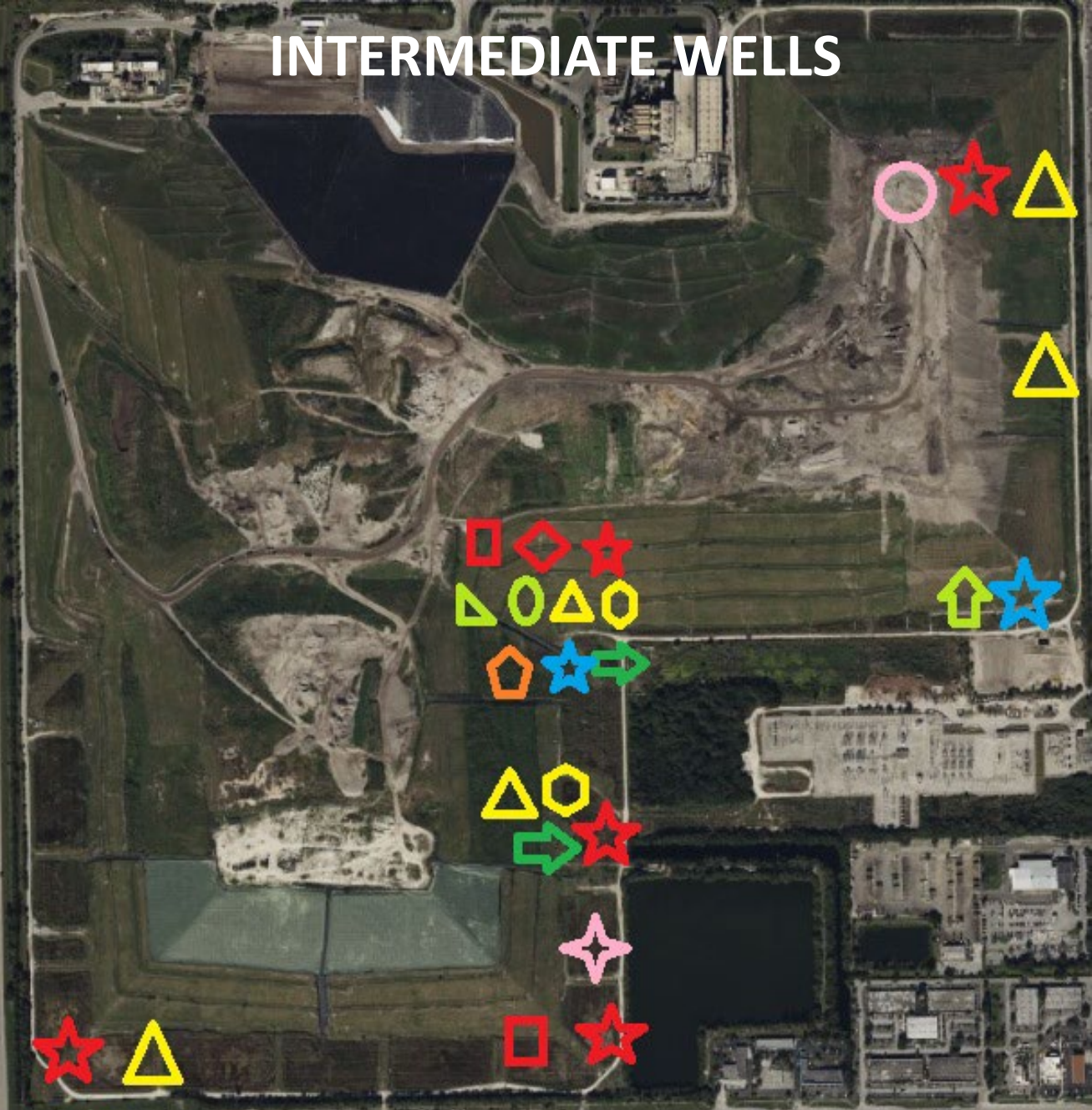


COCONUTCREEK.NET/LANDFILL

SHALLOW WELLS



INTERMEDIATE WELLS



Connect With Us



COCONUTCREEK.NET/LANDFILL

County's Actions Through the Years

2000's - Today

Landfill
Height
Increased

230'
220'
210'
200'
190'
180'
170'
160'
150'
140'
130'
120'
110'
100'
90'
80'
70'
60'
50'
40'
30'
20'
10'
0'



10 ft.
1978

From
10 ft.
40 ft.
1979

From
40 ft.
125 ft.
1989

Waste
Management
purchases
adjacent land.

From
125 ft.
225 ft.

Waste Management
purchases more land.

Vertical and lateral
expansions approved.
Site reaches 500 acres.

Connect With Us



COCONUTCREEK.NET/LANDFILL

City's Actions Through the Years

1990's

Formal objections
to rezoning and
expansions both
vertical and
horizontal

2010
to
2015

**Formal dispute
resolution** with
Broward County

**Formal objection to
Waste to Energy Plant
closure**

2016

Formal objection
to leachate deep
well injection

2016
to
Today

Ongoing objections
to landfill expansion
and potential
rezoning

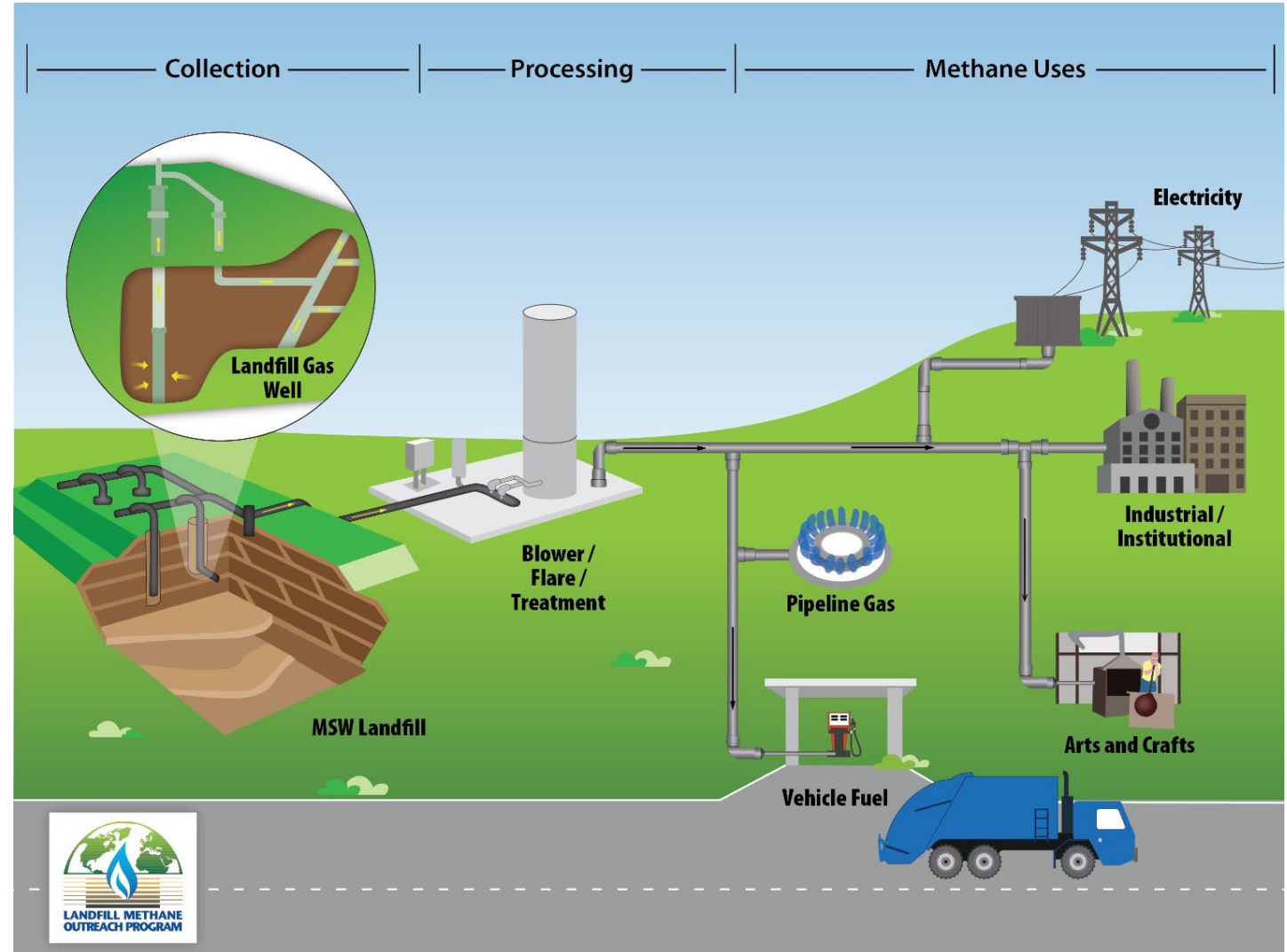
Connect With Us



COCONUTCREEK.NET/LANDFILL

Results of the City's Actions

- Odor Mitigation Plan
- Landfill gas collection system upgrade
- Settlement Agreements



Connect With Us



COCONUTCREEK.NET/LANDFILL

Settlement Agreement Terms

STINKY
HOUSEHOLD WASTE
LIMITED TO

175,000

TONS PER YEAR

GRIT AND
SCREENINGS
LIMITED TO

20,000

TONS PER YEAR

MUNICIPAL
SLUDGE
LIMITED TO

5,000

TONS PER YEAR

**ODOR COMPLAINTS
REDUCED BY OVER 90%**

Connect With Us



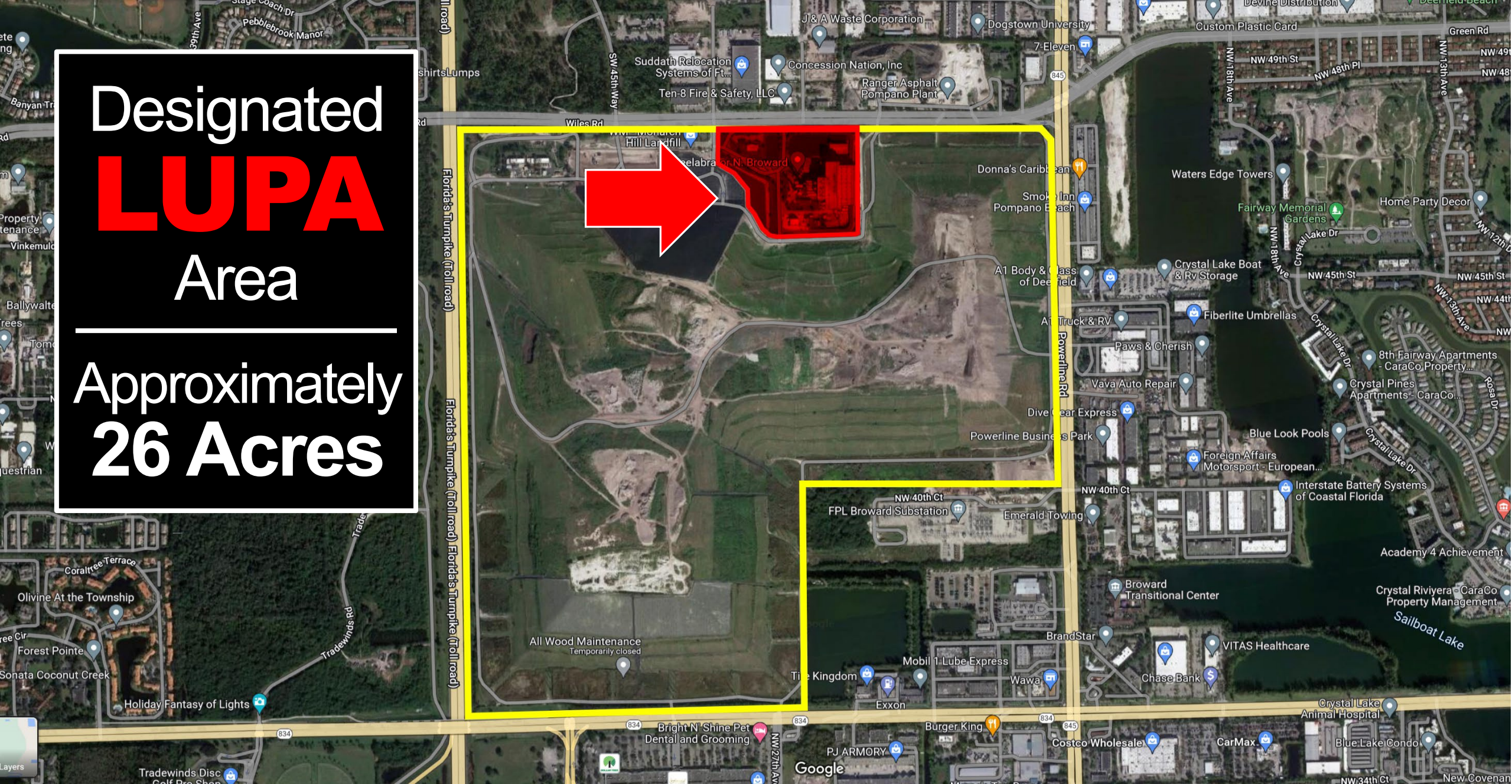
[COCONUTCREEK.NET/LANDFILL](https://coconutcreek.net/landfill)

Waste Management has submitted a **Land Use Plan Amendment (LUPA)** application

This would change the land use designation
from **Electrical Generation** to **Industrial**.
No other sites in Broward County are
approved for electric generation.

Designated **LUPA** Area

Approximately
26 Acres



Connect With Us



[COCONUTCREEK.NET/LANDFILL](https://coconutcreek.net/landfill)

Why It Matters

Opens the door to massive vertical expansion potential



Connect With Us



COCONUTCREEK.NET/LANDFILL

Why It Matters

Allowing Waste Management to demolish the North WTE Facility is in conflict with the Solid Waste Working Group, Broward County long term goals, and sets the stage for Monarch Hill to become larger.

Expansion of Monarch Hill Landfill will exacerbate:



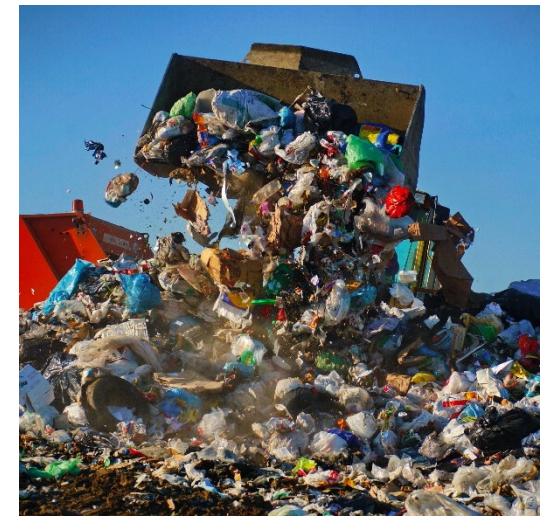
Ongoing Groundwater Contamination



Continued Odor and Bird Issues



Once the Land Use Designation is changed there is little to no possibility of getting it back



STOP the LUPA!

Planning Council Public Hearing is scheduled for

October 27, 2022 at 10:00 AM

PLEASE ATTEND THIS MEETING!

Updates at: Coconutcreek.net/HeadsUp

Connect With Us



COCONUTCREEK.NET/HEADSUP

Solid Waste in Broward County

3 Components

Hauling



Disposal

Recycling

Connect With Us



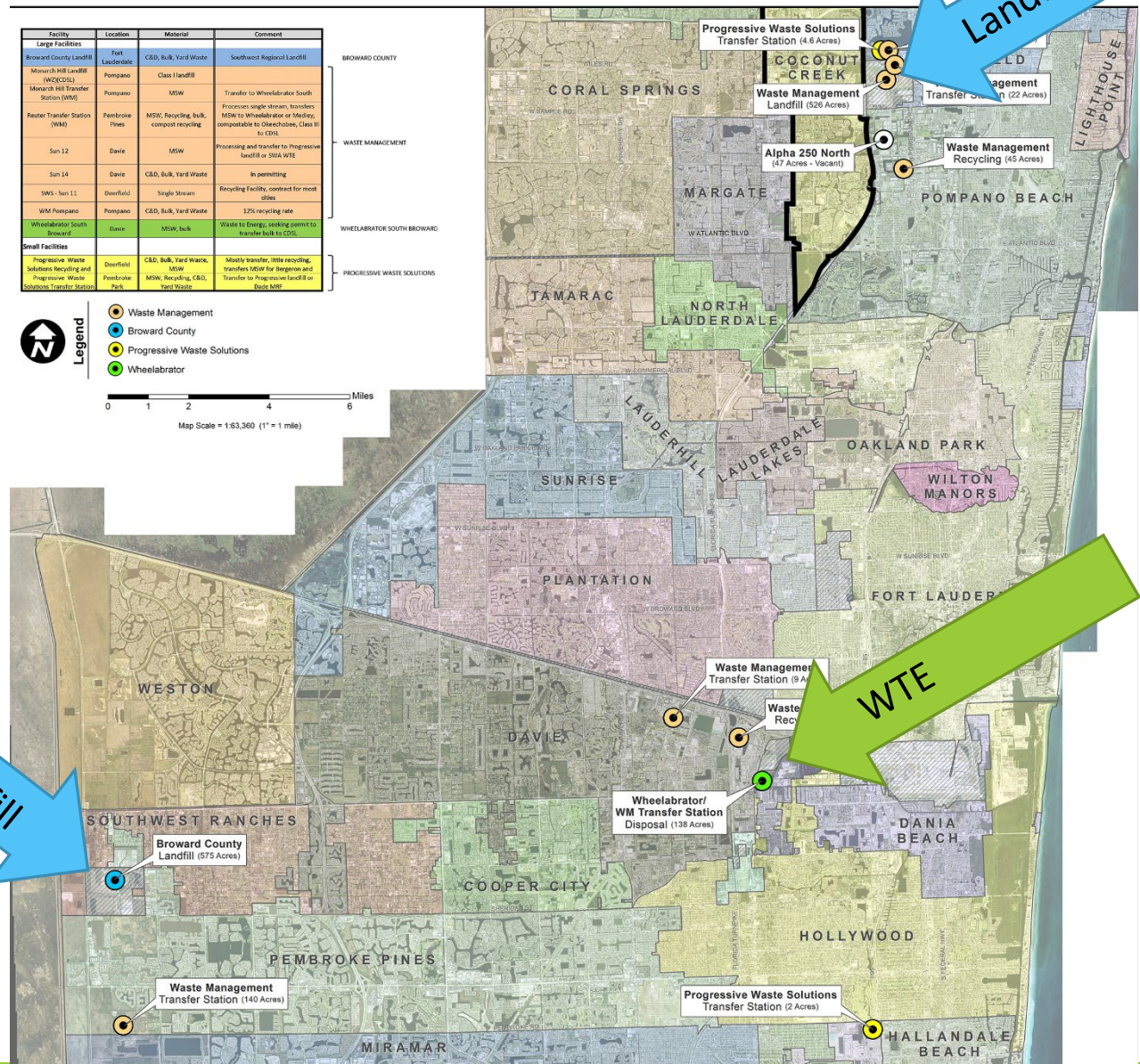
[COCONUTCREEK.NET/LANDFILL](https://coconutcreek.net/landfill)

SOLID WASTE & RECYCLING FACILITIES IN BROWARD COUNTY

Facility	Location	Material	Comment
Large Facilities			
Broward County Landfill	Fort Lauderdale	C&D, Bulk, Yard Waste	Southwest Regional Landfill
Monarch Hill Landfill (W2/CDS)	Pompano	Class I Landfill	
Monarch Hill Transfer Station (WMS)	Pompano	MSW	Transfer to Wheelabrator South
Reyer Transfer Station (WMS)	Pembroke Pines	MSW, Recycling, bulk, compost recycling	Process single stream, transfer MSW to Wheelabrator or Medley, compostable to Okeechobee, Class II in CDS
Sun 12	Davie	MSW	Processing and transfer to Progressive landfill or SWA WTE
Sun 14	Davis	C&D, Bulk, Yard Waste	In permitting
SWS - Sun 11	Overfield	Single Stream	Recycling Facility, contract for most cities
WM Pompano	Pompano	C&D, Bulk, Yard Waste	12% recycling rate
Wheelabrator South Broward	Davis	MSW, bulk	Waste to Energy, seeking permit to transfer back to CDS
Small Facilities			
Progressive Waste Solutions Recycling and Progressive Waste Solutions Transfer Station	Overfield	C&D, Bulk, Yard Waste, MSW	Mostly transfer, little recycling, transfers MSW for Bergeson and Transfer to Progressive landfill or Eco-Mat



Map Scale = 1:63,360 (1" = 1 mile)



Connect With Us



COCONUTCREEK.NET/LANDFILL

Solid Waste Disposal in Broward County

1964
to
1971

Broward County owned and
operated Monarch Hill

1971

Broward County
discontinues
landfilling

Waste Management
purchases adjacent
property

1986
to
2013

RRB formulated and
WTE constructed

Connect With Us



COCONUTCREEK.NET/LANDFILL

Resource Recovery Board

- Formed by Inter-local Agreement between Broward County & municipalities
- Purpose: To manage 2 WTE plants funded by the public
- Charter expired 2013

Fallout from RRB Expiration

- Waste Management/Wheelabrator closed North Waste to Energy Plant (WTE)
- Acquired and usurped competitors who stepped up to fill the service gap created by Waste Management's closure of the North Plant
- Making landfilling more profitable (and no competition for recycling)

The Future of Disposal



The cities and Broward County created the Solid Waste Working Group (SWWG) in 2019

What Is the Goal of the SWWG?

Mission Statement:

The Authority will develop and implement a long-term, environmentally sustainable, transparent, innovative, and economically efficient plan and approach to disposal, reduction, recycling, and reuse of waste generated in Broward County.

What's Next for the SWWG?

1. Complete the Governance Structure of the SWWG
2. Develop a **PLAN** to deal with garbage countywide



CoconutCreek.net/Recycle

Connect With Us



COCONUTCREEK.NET/RECYCLE

History of Recycling in Creek



- 2019: Overseas recycled material demand collapsed
- Processing (sorting) costs essentially doubled. Currently \$105.62
- City suspended single stream program in 2020

Recycling Commodity Values

Average Material Value (Per Ton)			
	SEP 2018	NOV 2019	SEP 2022
Corrugated Cardboard	\$87.50	\$32.50	\$82.50
Plastics #1 and #2	\$1,435.00	\$1,560.00	\$1,125.00
Metal Cans	\$1,570.00	\$1,012.50	\$1,730.00

Before 2018: **received** \approx \$40,000 per year. 2019: **paid** over \$200,000

The Recycling Goal

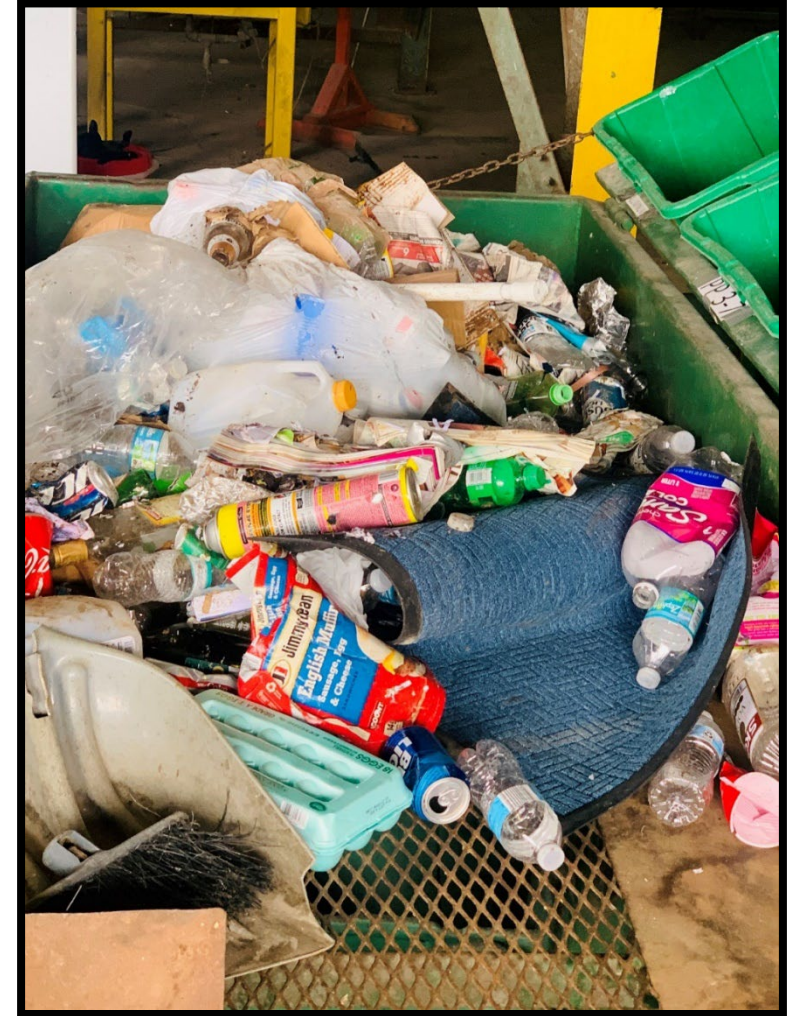


Connect With Us



COCONUTCREEK.NET/RECYCLE

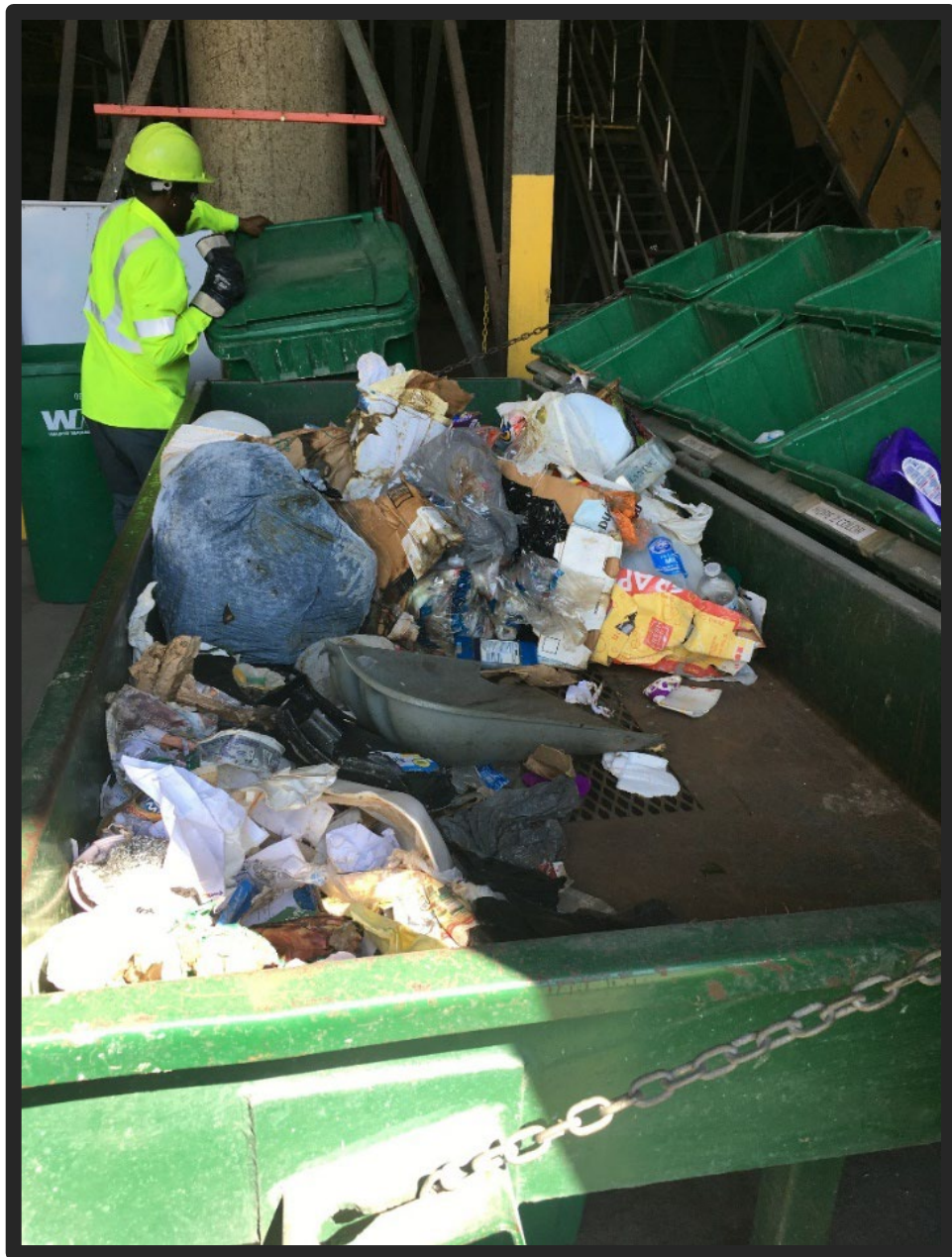
Contamination In Recycling



Connect With Us



[COCONUTCREEK.NET/RECYCLE](https://coconutcreek.net/recycle)



Connect With Us



COCONUTCREEK.NET/RECYCLE

Current Recycling Program

Recyclables Only

**Corrugated
Cardboard**
(BROKEN DOWN)



**Empty Aluminum
& Steel Cans**



**Empty Plastic Bottles
With Screw Caps**



CoconutCreek.net/Recycle

No: glass, newspaper, mailers, other plastics,
plastic bags, bagged material or **anything else.**

Coconut Creek Drop-Off Center

Rinsed aluminum and steel cans

Rinsed plastic bottles and jugs
(#1 and #2)

Corrugated cardboard boxes
(Flattened)

Connect With Us



COCONUTCREEK.NET/RECYCLE

Current Recycling Program

Coconut Creek Recycle Right Drop-Off Center

- 4800 West Copans Road (Behind Police Dept.)
- To encourage proper recycling habits



Connect With Us



COCONUTCREEK.NET/RECYCLE

Why Don't We Recycle Glass?



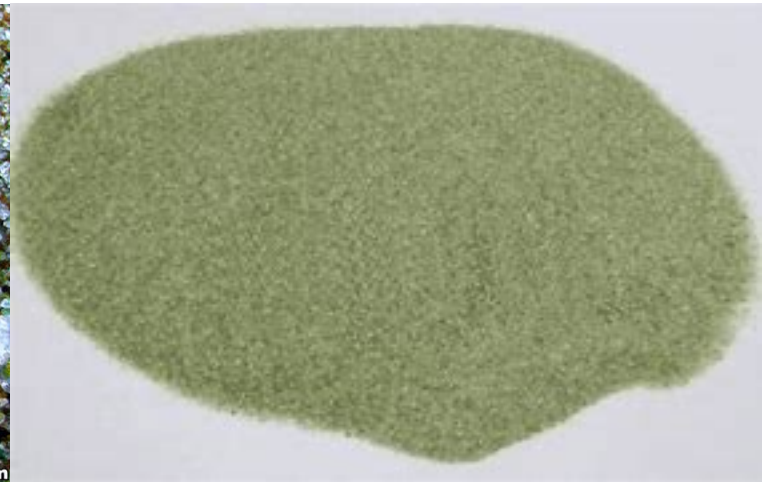
Connect With Us





[COCONUTCREEK.NET/RECYCLE](https://coconutcreek.net/recycle)

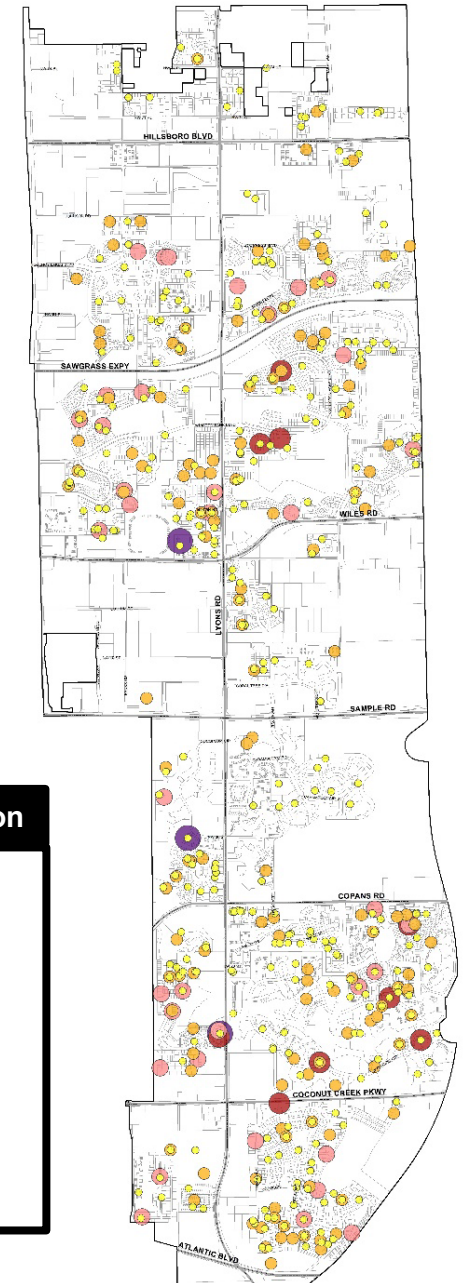
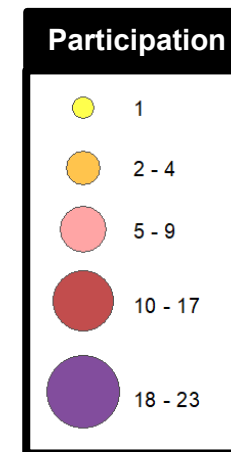
Glass to Sand Pilot Project

- Will be located at the Coconut Creek Recycle Right Drop-Off Center
- Accepts the full spectrum of bottles
- Assessing safety protocols



Next Steps

- Implement Glass-to-Sand program
- Coordinate additional Drop-Off events/sites
-  Drive down contamination
-  Increase recycling
- Reduce Waste



What can **YOU** do?

- Reduce → Reuse → Recycle
- Say **NO** to single-use plastics



Three Things You Can Do

1. Stop the LUPA!

*Planning Council Public Hearing is scheduled for
October 27, 2022 at 10:00 AM*

2. Be drop-off site Ambassadors

3. Reduce. Reuse. Recycle.

coconutcreek.net/passupplastics

Garbage Collection Issues



Missed collections, contact
Republic Services Hotline
954-327-9550

Email

coconutcreekquestions@republicservices.com



Contact the
Public Works Department
954-973-6780

Email

solidwaste@coconutcreek.net

Connect With Us



COCONUTCREEK.NET/LANDFILL

Connect With Us

HEADS UP

Creek

COCONUTCREEK.NET/HEADSUP



Facebook



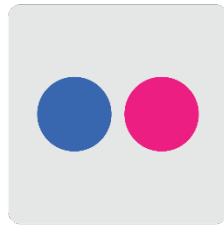
LinkedIn



Twitter



Instagram



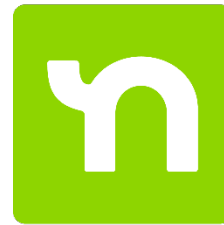
Flickr



YouTube



CreekTV



NextDoor



CocoGRAM

Upcoming Ambassador Meetings

- Monthly Meetings
- Relevant Topics aligned with strategic priorities
- An engaged community, working together

Thursday, Nov. 10, 2022	Public Safety Programs in the Police Department
Thursday, Dec. 8, 2022	Vulnerability Assessment
Thursday, Jan. 12, 2023	Transit Master Plan

Questions?

Connect With Us



[COCONUTCREEK.NET/LANDFILL](https://coconutcreek.net/landfill)